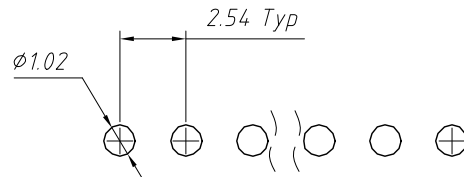
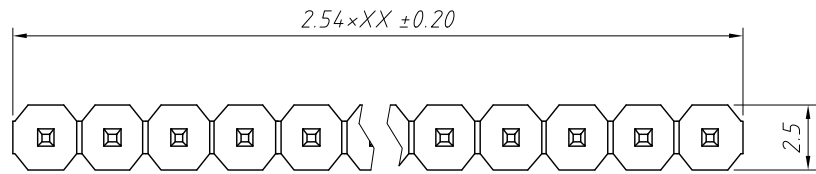


1
RoHS Compliance

7		8	
REV	SYM	Revision Record	Appr. Date
V0	KLS01001	New Version Release	WuHao 2025-07-16



Recommended PCB Layout
Tolerance: ±0.05mm

Material

Insulator: Glass filled PBT,UL 94V-0,Black

Contacts: Brass,Whole Gold plated over Nickel

Electrical:

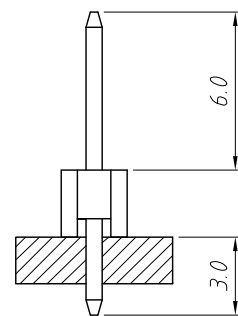
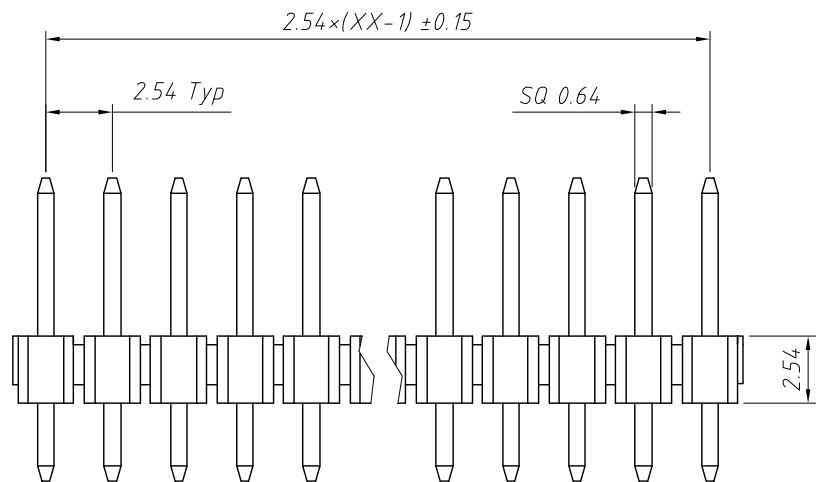
Contact Resistance:30mΩ Max. at DC 100mA

Insulator Resistance:1000MΩ Min. at 500V DC

Withstanding Voltage:1000V AC/rms 50Hz For 1 minute

Current Rating: 2 AMP

Operating Temperature: -40℃~+105℃



Order Information:

L-KLS1-207-1-03-S

L: RoHS

Female Header

207: 2.54mm

1:Single layer

No.of (2~40)Pins

S: Straight Pin

ANGLE TOLERANCE	PROJECTION	Description:	2.54mm Pitch	
±3°			Female Header Connector	
GENERAL TOLERANCE	UNITS	mm	KLS P/N:	L-KLS1-207-1-XX-S
x.x ±0.30	SHEET SIZE	A4		
x.xx ±0.20	Draw:	WuHao	2025-07-16	NingBo KLS ELECTRONIC CO.,LTD.
x.xxx ±0.10	Check:	Daniel	2025-07-16	