

SNAP-IN PC CLIPS



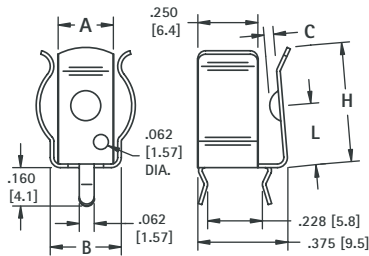
No Ears



- Available for "A" • "AA" • "AAA" • "AAAA" • "N" size batteries
- Mounts securely to the PC board with advanced "Snap-In" design for thru hole mounting
- "Snap-In" clip holds firmly for wave soldering
- Reliable spring tension assures low contact resistance
- Low profile, economical design
- Retains battery securely to withstand shock and vibration



For "A" • "AA" • "AAA" • "N"

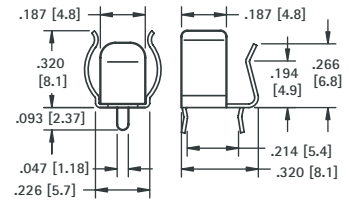


Refer to page 25 for Battery Contact Layout & Mounting Details

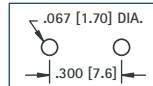
MATERIAL:
Spring Steel Tin Nickel Plate

CAT. NO.	A	B	C	H	L	MATERIAL THICKNESS	BATTERY DIAMETER	BATTERY SIZE
52	.250 (6.4)	-	.032 (0.8)	.500 (12.7)	.280 (7.1)	.010 (.25)	No Ears	"A" • "AA"
92	.312 (7.9)	.375 (9.5)	.056 (1.4)	.593 (15.1)	.359 (9.1)	.012 (.30)	531-.665 (13.5-16.9)	
2915	.312 (7.9)	.375 (9.5)	.050 (1.3)	.593 (15.1)	.359 (9.1)	.015 (.39)		"AAA" • "N"
82	.250 (6.4)	.300 (7.6)	.040 (1.0)	.500 (12.7)	.280 (7.1)	.010 (.25)	.375-.460 (9.5-11.7)	
51	See drawing for Cat. No. 51					.010 (.25)	.300-.350 (7.6-8.9)	"AAAA"

For "AAAA"

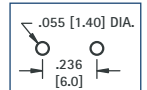


Mounting Detail



MATERIAL: .010 (.25) thick Spring Steel,
Tin Nickel Plate

Mounting Detail



CAT. NO. 51